


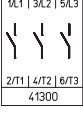
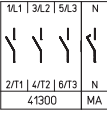


Main Switches

- Front mounting switches with single hole mounting
- 3 up to 8 pole
- 20 A up to 63 A
- IP66



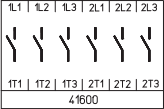
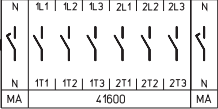
Switching programme	Rated data (IEC 60947)			Mounting dimension (mm)	Padlock device N-handle black	Padlock device M-handle black	Padlockable handle V-handle silver/black
	Operat. current I_e	Operational power (at 380–440 V)			 OFF ON	 OFF ON	 OFF ON
	AC-21A (A)	AC-23A (kW)	AC-3 (kW)		IP66	IP66	IP66
					Order code number	Order code number	Order code number
41300 – 3 pole – without auxiliary contacts 	20	5.5	3.7	∅ 22.5	H216-41300-206N1	H216-41300-206M1	H216-41300-206V1
	20	5.5	3.7	∅ 30.5	H216-41300-216N1	H216-41300-216M1	H216-41300-216V1
	25	7.5	5.5	∅ 22.5	H220-41300-206N1	H220-41300-206M1	H220-41300-206V1
	25	7.5	5.5	∅ 30.5	H220-41300-216N1	H220-41300-216M1	H220-41300-216V1
	32	11	7.5	∅ 22.5	H226-41300-206N1	H226-41300-206M1	H226-41300-206V1
	32	11	7.5	∅ 30.5	H226-41300-216N1	H226-41300-216M1	H226-41300-216V1
	40	15	11	∅ 22.5	H233-41300-206N1	H233-41300-206M1	H233-41300-206V1
	40	15	11	∅ 22.5	B240-41300-206N1*	B240-41300-206M1*	B240-41300-206V1*
	40	15	11	∅ 30.5	H233-41300-216N1	H233-41300-216M1	H233-41300-216V1
	40	15	11	∅ 30.5	B240-41300-216N1*	B240-41300-216M1*	B240-41300-216V1*
	50	18.5	15	∅ 22.5	B250-41300-206N1	B250-41300-206M1	B250-41300-206V1
	50	18.5	15	∅ 30.5	B250-41300-216N1	B250-41300-216M1	B250-41300-216V1
	63	22	18.5	∅ 22.5	B263-41300-206N1	B263-41300-206M1	B263-41300-206V1
	63	22	18.5	∅ 30.5	B263-41300-216N1	B263-41300-216M1	B263-41300-216V1
41400 – 4 pole – without auxiliary contacts – neutral contact early make/late break 	20	5.5	3.7	∅ 22.5	H216-41400-206N1	H216-41400-206M1	H216-41400-206V1
	20	5.5	3.7	∅ 30.5	H216-41400-216N1	H216-41400-216M1	H216-41400-216V1
	25	7.5	5.5	∅ 22.5	H220-41400-206N1	H220-41400-206M1	H220-41400-206V1
	25	7.5	5.5	∅ 30.5	H220-41400-216N1	H220-41400-216M1	H220-41400-216V1
	32	11	7.5	∅ 22.5	H226-41400-206N1	H226-41400-206M1	H226-41400-206V1
	32	11	7.5	∅ 30.5	H226-41400-216N1	H226-41400-216M1	H226-41400-216V1
	40	15	11	∅ 22.5	H233-41400-206N1	H233-41400-206M1	H233-41400-206V1
	40	15	11	∅ 22.5	B240-41400-206N1*	B240-41400-206M1*	B240-41400-206V1*
	40	15	11	∅ 30.5	H233-41400-216N1	H233-41400-216M1	H233-41400-216V1
	40	15	11	∅ 30.5	B240-41400-216N1*	B240-41400-216M1*	B240-41400-216V1*
	50	18.5	15	∅ 22.5	B250-41400-206N1	B250-41400-206M1	B250-41400-206V1
	50	18.5	15	∅ 30.5	B250-41400-216N1	B250-41400-216M1	B250-41400-216V1
	63	22	18.5	∅ 22.5	B263-41400-206N1	B263-41400-206M1	B263-41400-206V1
	63	22	18.5	∅ 30.5	B263-41400-216N1	B263-41400-216M1	B263-41400-216V1

* larger terminal capacity, see page 154

Further switching programmes from page 132.

Disconnect Switches

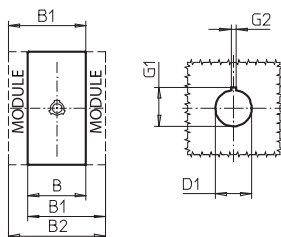
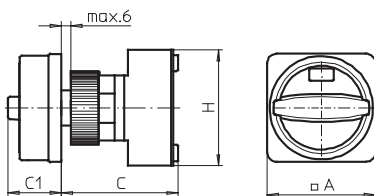
Main Switches Front mounting Single hole mounting

Switching programme	Rated data (IEC 60947)			Mounting dimension (mm)	Padlock device N-handle black	Padlock device M-handle black	Padlockable handle V-handle silver/black
	Operat. current I_e	Operational power (at 380–440 V)			IP66	IP66	IP66
	AC-21A (A)	AC-23A (kW)	AC-3 (kW)		Order code number	Order code number	Order code number
41600 – 6 pole – without auxiliary contacts 	20	5.5	3.7	∅ 22.5	H216-41600-206N1	H216-41600-206M1	–
	20	5.5	3.7	∅ 30.5	H216-41600-216N1	H216-41600-216M1	H216-41600-216V1
	25	7.5	5.5	∅ 22.5	H220-41600-206N1	H220-41600-206M1	–
	25	7.5	5.5	∅ 30.5	H220-41600-216N1	H220-41600-216M1	H220-41600-216V1
	32	11	7.5	∅ 22.5	H226-41600-206N1	H226-41600-206M1	–
	32	11	7.5	∅ 30.5	H226-41600-216N1	H226-41600-216M1	H226-41600-216V1
	40	15	11	∅ 22.5	H233-41600-206N1	H233-41600-206M1	–
	40	15	11	∅ 30.5	H233-41600-216N1	H233-41600-216M1	H233-41600-216V1
41800 – 8 pole – without auxiliary contacts – 2 neutral contacts early make/late break 	20	5.5	3.7	∅ 22.5	H216-41800-206N1	H216-41800-206M1	–
	20	5.5	3.7	∅ 30.5	H216-41800-216N1	H216-41800-216M1	H216-41800-216V1
	25	7.5	5.5	∅ 22.5	H220-41800-206N1	H220-41800-206M1	–
	25	7.5	5.5	∅ 30.5	H220-41800-216N1	H220-41800-216M1	H220-41800-216V1
	32	11	7.5	∅ 22.5	H226-41800-206N1	H226-41800-206M1	–
	32	11	7.5	∅ 30.5	H226-41800-216N1	H226-41800-216M1	H226-41800-216V1
	40	15	11	∅ 22.5	H233-41800-206N1	H233-41800-206M1	–
	40	15	11	∅ 30.5	H233-41800-216N1	H233-41800-216M1	H233-41800-216V1

Further switching programmes from page 132.

Dimensions in mm:

Setup of order code number		
Type	Switching progr.	Mtg. form
H226	41300	206N1
Order code no.	H226-41300-206N1	



Switching programmes 3 and 4 pole

Types H216 / H220 / H226 / H233:

Mtg. form	A	B	B1	B2	C	C1	D1	G1	G2	H
206M1	67	36	48	60	75	38	22.5	24.2	3.2	70
206N1	67	36	48	60	75	33	22.5	24.2	3.2	70
206V1	48	36	48	60	75	32	22.5	24.2	3.2	70
216M1	67	36	48	60	75	38	30.5	33	4.8	70
216N1	67	36	48	60	75	33	30.5	33	4.8	70
216V1	64	36	48	60	75	39	30.5	33	4.8	70

Types B240 / B250 / B263:

Mtg. form	A	B	B1	B2	C	C1	D1	G1	G2	H
206M1	67	50	69	88	75	38	22.5	24.2	3.2	72
206N1	67	50	69	88	75	33	22.5	24.2	3.2	72
206V1	48	50	69	88	75	32	22.5	24.2	3.2	72
216M1	67	50	69	88	75	38	30.5	33	4.8	72
216N1	67	50	69	88	75	33	30.5	33	4.8	72
216V1	64	50	69	88	75	39	30.5	33	4.8	72

Switching programmes 6 and 8 pole

Types H216 / H220 / H226 / H233:

Mtg. form	A	B	B1	B2	C	C1	D1	G1	G2	H
206M1	67	72	84	96	83	38	22.5	24.2	3.2	70
206N1	67	72	84	96	83	33	22.5	24.2	3.2	70
216M1	67	72	84	96	83	38	30.5	33	4.8	70
216N1	67	72	84	96	83	33	30.5	33	4.8	70
216V1	64	72	84	96	83	39	30.5	33	4.8	70